

High Intensity Mixer **HM**

CONSISTENTLY HIGH PRODUCT QUALITY | SHORT PROCESS CYCLES - HIGH THROUGHPUT



High Intensity Mixer **HM**

All Advantages at a Glance

- Process-optimized mixing tools for optimum energy input
- Innovative aspiration for optimum dehumidification of the mixture

The **Perfect Solution** for **High Performance** Applications with Higher Throughputs

The High Intensity Mixer series HM provides the best solution for all those applications in which the dispersion of powders with powders or granules or with the liquid addition is requested.

The Applications are Multiple and here we List the Main Ones:

- Rigid and soft PVC dry-blend
- WPC (Wood Plastic Composites PVC/PP/PE based with wood flour)
- Thermoplastic polymers (PVH, PVA, PC, POM, etc.)
- Hot or cold dispersion of color master-batch, additives and powders
- Powder coatings pre-mixing
- Powder coatings bonding with metallic pigments or micas
- Battery active materials & Battery mass (e.g. DBE)

Technical Data

| Type HM | Total Volume | Usable Volume | Standard Motor Power | Available Motor Power |
|---------|--------------|---------------|----------------------|-----------------------|
| | liters | liters | kW | kW |
| HM 200 | 200 | 170 | 45 | 15-75 |
| HM 300 | 300 | 255 | 75 | 22-90 |
| HM 400 | 400 | 340 | 90 | 30-132 |
| HM 500 | 500 | 425 | 110 | 37-160 |
| HM 600 | 600 | 510 | 132 | 45-200 |
| HM 700 | 700 | 595 | 160 | 55-250 |
| HM 800 | 800 | 680 | 200 | 75-315 |
| HM 1000 | 1000 | 850 | 200 | 90-355 |
| HM 1200 | 1200 | 1020 | 250 | 110-450 |
| HM 1500 | 1500 | 1275 | 315 | 132-550 |
| HM 2000 | 2000 | 1700 | 500 | 160-630 |
| HM 2500 | 2500 | 2125 | 600 | 200-700 |

Custom Solutions

Additional sizes and execution available on request. Get in touch!



The data shown in the tables are indicative and must be confirmed by MIXACO Maschinenbau.

Attention to Details

Solutions to Maximize Your Production

High Intensity Mixer **HM**

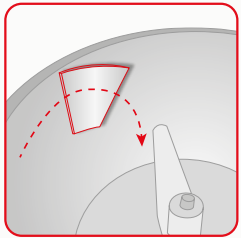


Due to its unique design, the MIXACO HM Mixer combines high throughput with fast homogenization, high shear forces and fast results.

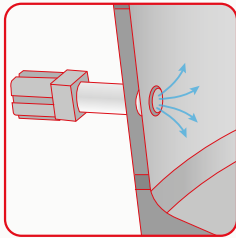
All surfaces in contact with the product are made of stainless steel finely polished to provide easy cleaning and to prevent the buildup of material.

Accessories

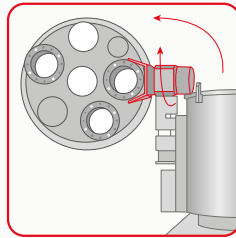
Extract of Additional Expansion & Options



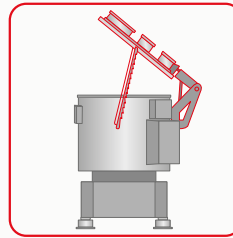
Deflector



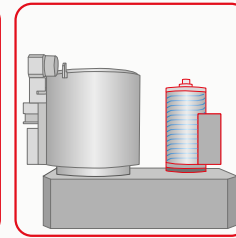
Side Injection Nozzle



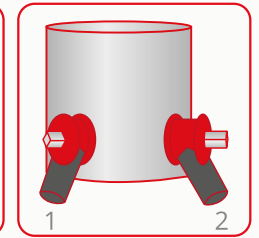
Lid Tilting



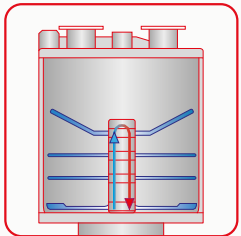
Hinged Lid



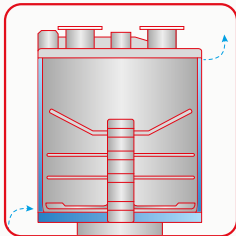
Water Cooled Motor



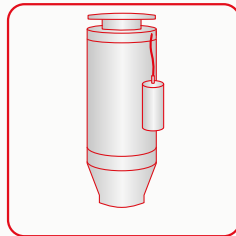
Dual Discharge Motor



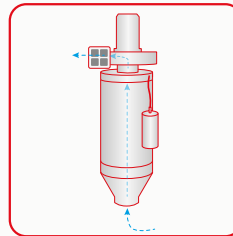
Water Cooled Tools



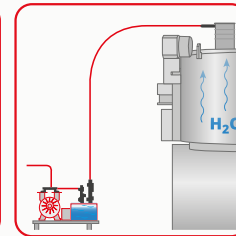
Vessel Tempering



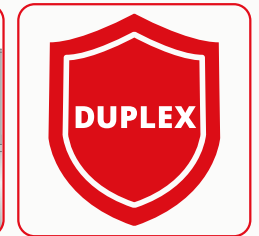
Jet-Filter



Aspiration



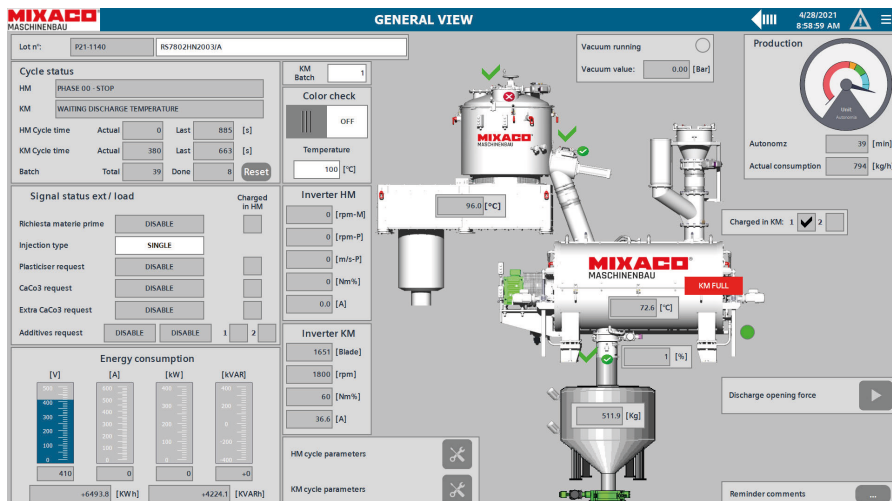
Vacuum Dehumidifying



Wear Resistant Vessel

Visualization

The informative and clear MIXACO process visualization on the operating panel ensures that the entire High Intensity Mixer can be safely and reliably operated.



Control

- Siemens S7-1500 PLC: Meet today's requirements for safety, efficiency and cost-effectiveness
- Remote maintenance module enables fast and secure access
- The development and programming of the control system from a single source ensures optimum integration of the mixer components